




Tamashii®

Tibet

Essence and simplicity





“We have travelled to the most remote places
to discover ancient traditions and objects
with the most powerful meaning”

Welcome to the world of Tamashii®

ॐ
Tamashii®
Tibet





Tamashii®

Tibet

Tibetan jewellery has a strong symbolic value and passes on ancient cultural and religious traditions. In the Buddhist tradition, gems and precious stones serve as metaphors for ideals of faith and convey enigmatic spiritual conditions and our hidden personal characteristics. Made with natural stones, TAMASHII® jewellery is used by Tibetan monks as a talisman and as part of their religious practices. In fact, TAMASHII® means “soul” - the word comes from “tama” that means “jewel”, making “jewel of the soul”. People who wear these bracelets pursue an ideal of peace and love for themselves and for the world. These bracelets help to protect the soul, enable it to grow and to find a purpose - and a meaning to life.

TAMASHII® is made in Tibet and the bracelets are blessed by Buddhist monks.

“Om Mani Padme Hum”



ARIAPREZIOSA
Vicenza Italy



... a story that began in far off lands

We discovered Tamashii® bracelets during a trip to Tibet in 2006. And we brought them back to Italy because they are so charming. This charm is the combination of their beauty, their meaning and the many qualities they possess. We also hoped to spread the message of peace and fellowship from the Tibetan people.

Today's Tamashii® bracelet retains the original's shape, production and calabash. Simple beads made from stone, wood or metal are always linked to the number nine and have been replaced by natural, hard, semi-precious, and precious stones.





Unique jewellery overflowing with meaning

Every Tamashii® bracelet, ring or pendant, carries its own story because they are still made with the same traditional ancient methods. Their meaning is not just linked to the stone that embellishes it. More importantly, it's about the people who make them and endow them with inestimable value.

Tamashii® products are made in Tibet and are blessed by Buddhist monks





The Calabash

Each Tamashii® bracelet is characterised by a wooden element, that represents a pumpkin full of seeds, called the Kamawatchi Calabash or simply Calabash. It represents the continuity of life in a distinctive way.

Inhabitants of Zang (Xizang, Tibet) believe this amulet signifies happiness because it reminds us of the certainty of life's continuity.



Contents

PRODUCT CATEGORIES page

TRADITIONAL BRACELET	12
PRAYER WHEEL	125
TIBETAN PRAYER FLAGS	134
RINGS	136
QUARTZ MOSAIC BRACELETS	138
“BLUES” BRACELETS	140
“BLACKS” BRACELETS	142
“MANTRA” BRACELETS	144
“BKRA SHI” BRACELETS	148
TIBETAN MALA	151
MUDRA NECKLACES	152
EARRINGS	160
LOBE EARRINGS	162
ZVA RINGS	164
RIG ZVA PENDANTS	169

STONES (TRADITIONAL BR.) page

AFRICAN JASPER	143
AFRICAN TURQUOISE	38, 128, 158
AMAZONITE	48

AMETHYST	16, 87, 145
AQUA GREEN JADE	68, 129
AQUAMARINE	99, 155
ARCTIC JASPER	103
ASTROPHYLLITE	107
AVENTURINE	114
BLACK CHERRY AGATE	55, 155
BLACK LAVA	43, 128, 159
BLENDED OPAL	100
BLUE AGATE	20, 53, 83, 127, 131, 141, 146, 154, 157
BLUE ANGELITE	78
BLUE OCEAN STONE	113
BLUE SKY STONE	124
BLUE STONE COLLAR / GREEN	72 / 143
BRONZE AGATE	32
BROWN AGATE	140, 154
BROWN TIGER'S EYE	81, 131, 159
CAMOUFLAGE STONE	44
CARNELIAN	21, 146, 154
CHALCEDONY	59
CHRYSOPTASE	30
CITRINE	22
COLOURED MOONSTONE	84
DARK YELLOW AGATE	79
ENGRAVED BLACK JADE	54
FLUORITE	71

FOSSIL CORAL / RED F. C. 105 / 110
FOSSIL WOOD 39
GARNET 47
GOLD AND TURKESE 109
GOLD RUTILATED QUARTZ 95
GOLD SILK JADE 122
GREEN AGATE 17, 52, 127, 130, 145,
154, 157
GREEN ANGELITE 97
GREEN QUARTZ 121
GREY AGATE 147
HAWK'S EYE 90, 129
HEMATITE 23, 37, 128, 146, 158
ICE AGATE 24, 91
INDIGO GABBRO 104
IOLITE 108
JADE 45
K2 STONE 93
KYANITE 101
KUNZITE 49
LABRADORITE 70
LAKE GREEN AGATE 141
LAKE GREEN JADE 82
LAPIS LAZULI 29
LAVENDER JADE 69
LIGHT BLUE JADE 141

MICA CRYSTAL 116
MINT GREEN AGATE 76
MOCHA STONE 106
MOONSTONE 61
MOSS AGATE 19, 127, 146, 153, 157
MOTHER-OF-PEARL 28
MULTI-COLOURED AGATE 85, 155
NATURAL PEARL 57, 155, 159
NEW OCEAN STONE 117
OCEAN BLUE AGATE 25, 146, 158
ONYX 13, 36, 126, 128, 130, 131, 143, 145,
153, 154, 157, 158
ORANGE JADE 74
PALE YELLOW JADE 141
PEACH JADE 73
PERSIAN GREEN AGATE 56
PHOSPHORUS ALUMINUM 115
PIETERSITE 102
PICASSO JASPER 62
PINK JADE 67, 131
PINK OPAL 50
PINK PEARL / BROWN 63 / 64
PINK QUARTZ 26, 129, 146
PINK TOURMALINE / BLACK 58 / 60
PURPLE AGATE 42
PURPLE MICA 92

PYRITE 14
RAINBOW STONE 94
RED AGATE 27, 33, 46, 80, 128, 129,
131, 143, 147, 159
RED GLUE FLOWER STONE 111
RHODOCHROSITE 51
ROCK CRYSTAL 34, 75, 142
RUBY - ZOISITE 89
SERPENTINE 119
SKY BLUE AGATE 141, 147, 155
SKY BLUE JADE 65, 129
SKY BLUE STRIPED AGATE 41
SODALITE 31, 128, 158
STRAWBERRY QUARTZ 88
TIBET SKY AGATE 77
TIGERS' EYE 40, 129, 159
TRIDACNA 98
TURQUOISE 15, 127, 130, 145, 153, 157
WATERMELON JADE 66
WAX JADE 96
WHITE AGATE 18, 127, 131, 145, 153
WHITE AOBao 123
YAMDROK JADE 112
YELLOW AGATE 35, 147
YELLOW SNOW STONE 86
YELLOW TURQUOISE 120

The Traditional Bracelet

Tamashii® bracelets represent and fit with the original basic meaning of the Tibetan amulet, Shamballa. It relates not only to its characteristics, but more importantly to its symbolic essence.

There are two types of Tamashii® bracelet - single loop or double loops. They are gender-neutral and fit any wrist size.



Single loop Tamashii® bracelet
Stones diameter 8mm



Single loop Tamashii® bracelet
Stones diameter 6mm



Double loop Tamashii® bracelet
Stones diameter 6mm

BLACK ONYX

Onyx, the black gemstone par excellence, is used by warrior monks to instil courage and self-esteem. In Buddhism, the colour black also represents humankind's primitive darkness, hate and violence.

A black onyx Tamashii® transforms these negative forces into positive ones - bad into good and hatred into compassion.

BHS900-01: single loop

BHS601-01: 6mm

BHS600-01: double loop

Om
Tamashii®
Tibet



ARIAPREZIOSA
Vicenza Italy

PYRITE

This stone is similar in colour to gold and is used in its place.

Buddhists associate gold with the sun, light and life, but also with the awareness of one's own roots and origins.

The pyrite Tamashii® transforms pride into wisdom.

ॐ
Tamashii®
Tibet



☯
ARIAPREZIOSA
Vicenza Italy

BHS900-03: single loop

BHS600-03: double loop

TURQUOISE

This natural stone is light blue in colour with shades of green.

Turquoise combines the meaning of these two colours and is often used for enigmatic significance in Buddhism. Green represents calm and blue ascension and purity.

A turquoise Tamashii® soothes the spirit, changing anger into wisdom.

BHS900-07: single loop

BHS601-07: 6mm

BHS600-07: double loop

Om
Tamashii®
Tibet



ARIAPREZIOSA
Vicenza Italy

AMETHYST

*Amethyst, a natural purple stone,
is also known as the stone
of humility.*

*It is used in Buddhist practices
to assist in the phases of
inner transformation
and development.*

*An amethyst Tamashii® calms
pride turning it into reflection
and introspection.*

BHS900-08: single loop

BHS601-08: 6mm

BHS600-08: double loop

ॐ
Tamashii®
Tibet



ARIAPREZIOSA
Vicenza Italy

GREEN AGATE

Agate is a stone that can be found naturally in a wide variety of colours. Here, green represents nature, trees and plants.

It brings together the qualities of balance and harmony with youthful energy and action.

A Tamashii® in green agate turns jealousy into the wisdom of self-realisation.

BHS900-12: single loop

BHS601-12: 6mm

BHS600-12: double loop

Om
Tamashii®
Tibet



ARIAPREZIOSA
Vicenza Italy

WHITE AGATE

This white natural stone represents purity, rest and meditation. And in Buddhism, it is represented by the Vairochana Buddha.

A Tamashii® in white agate turns the delusion of ignorance into the wisdom of reality.

ॐ
Tamashii®
Tibet



BHS900-14: single loop

BHS601-14: 6mm

BHS600-14: double loop

ARIAPREZIOSA
Vicenza Italy

MOSS AGATE

This yellow-green natural stone with dark green shades is associated with the Amoghasiddhi Buddha, which aspires to success, wealth and power.

Its multi-coloured tones may suggest ambition without competition or jealousy.

This Tamashii® turns pride into self-awareness.

BHS900-17: single loop

BHS601-17: 6mm

BHS600-17: double loop

ॐ
Tamashii®
Tibet



ARIAPREZIOSA
Vicenza Italy

BLUE AGATE

Blue is the most important colour in Buddhism, even more so than gold. It represents ascension and wisdom, truth, devotion, faith, peace as well as spiritual and intellectual life.

A blue Tamashii® is traditionally used to identify what is pure and rare. It calms anger turning it into wisdom.

BHS900-18: single loop

BHS601-18: 6mm

BHS600-18: double loop

Om
Tamashii®
Tibet



ARIAPREZIOSA
Vicenza Italy

CARNELIAN

Carnelian is a stone ranging in shades from yellow to bright red - the same colours that characterise the Gautama Buddha.

In Tibetan culture, it has come to represent the conservation of the life force, formed of usefulness (concreteness) and warmth (sentimentalism).

A Tamashii® in carnelian represents vitality and happiness.

BHS900-19: single loop

BHS601-19: 6mm

BHS600-19: double loop



Tamashii®

Tibet



ARIAPREZIOSA

Vicenza Italy

CITRINE

This yellow-coloured natural stone from the quartz family, the same colour as that of Gautama Buddha, is a symbol of humility and separation from a society based on materialism. It is the colour of the earth, encourages the relinquishment of desire, humility, increases the sense of duty and leads to openness towards others by loving more. The Tamashii® Citrine symbolises respect for one's origins, rootedness and tranquillity. It can be used to express the attainment of maturity.

BHS900-21: single loop



Tamashii®

Tibet



ARIAPREZIOSA

Vicenza Italy

HEMATITE

A black natural stone with iron origins, hematite can turn into red if reduced to dust.

This ability to transform itself gives this stone mysterious blood-related characteristics.

Ancient tradition used it to confront fear and overcome death. A hematite Tamashii® gives courage and protection during physical and mental conflicts.

BHS900-22: single loop

BHS601-22: 6mm

BHS600-22: double loop



Tamashii®

Tibet



ARIAPREZIOSA

Vicenza Italy

ICE AGATE

Ice color agate (Natural Agate Geode) is a stone with grey tones.

In the tibetan culture grey means penitence, passage, meditation from evil to good stay.
Very often this stone is used for new startings.

Grey Tamashii® gives support during the changing and renewing moments.

BHS900-24: single loop
BHS600-24: double loop

ॐ
Tamashii®
Tibet



ARIAPREZIOSA
Vicenza Italy

OCEAN BLUE AGATE

This agate represents the colour of the ocean and the sky.

In Tibetan culture, it's the most important colour as it represents purity, wisdom and peace.

This particular shade of blue gives this Tamashii® an even more elevated and divine appearance.

This Tamashii® recalls the sacred.

BHS900-31: single loop

BHS601-31: 6mm

BHS600-31: double loop

Om
Tamashii®
Tibet



ARIAPREZIOSA
Vicenza Italy

PINK QUARTZ

In the Buddhist world, pink is the colour of the lotus flower, which conveys illumination and spiritual regeneration.

It has deep and powerful meanings - such as spiritual growth, resurrection, awareness of one's own nature and strength, and the ability not to become contaminated by this world's corruption.

BHS900-33: single loop

BHS601-33: 6mm

BHS600-33: double loop

Om
Tamashii®
Tibet



ARIAPREZIOSA
Vicenza Italy

RED AGATE

Red is the colour of rituals and powerful actions, in Buddhism. It's the colour of passion, strength and what is sacred. It requires strong self-control as it could become dangerous to handle. Red is the colour that defines the boundary between good and evil - only truly wise people and spiritual figures can wear it.

A red Tamashii® brings power, stamina, vitality and passion and it suggests a wise person.

BHS900-34: single loop

BHS601-34: 6mm

BHS600-34: double loop

Om
Tamashii®
Tibet



ARIAPREZIOSA
Vicenza Italy

MOTHER-OF-PEARL

Mother-of-pearl is made from nearly white shells, meaning it can be associated with purity and knowledge.

The sea also represents longevity in Buddhism, so this bracelet represents foresight and clarity of mind even at a more advanced age.

Mother-of-pearl Tamashii® protect against mental illness and anxiety.

BHS900-39: single loop
BHS600-39: double loop

ॐ
Tamashii®
Tibet



☯
ARIAPREZIOSA
Vicenza Italy

LAPIS LAZULI

Since the dawn of civilisation, lapis lazuli has been one of the most remarkable and renowned precious stones. It was often used during Mesopotamian rituals and it was considered the place where the purest essence of the divine resides.

Wearing lapis lazuli contributes to make a person more trustworthy and honest, while remaining at peace with choices made in the past.

BHS900-43: single loop

BHS601-43: 6mm

ॐ
Tamashii®
Tibet



☯
ARIAPREZIOSA
Vicenza Italy

CHRYSOPRASE

Chrysoprase, known as a symbol of optimism, joy, and happiness, has properties that encourage a more positive outlook on life.

Chrysoprase promotes optimism and personal insight, stimulating acceptance of oneself and others.



Tamashii®

Tibet



ARIAPREZIOSA

Vicenza Italy

BHS900-50: single loop

SODALITE

Sodalite is a natural stone,
similar in meaning to *blue agate*.
It favours calm, turning anger
into wisdom through to the
purification and
ascension process.

A sodalite Tamashii® helps
the wearer to relax and reduce
tension, encouraging a calm
and relaxed mental state.

BHS900-51: single loop

BHS601-51: 6mm

BHS600-51: double loop

ॐ
Tamashii®
Tibet



ARIAPREZIOSA
Vicenza Italy

BRONZE AGATE

Bronze agate is a warm-coloured stone, which is used as a more precious alternative to wooden Tamashii®.

As with all natural colours, this bracelet represents the first step in process of change, based on humility and sacrifice.

This is the Tamashii® that initiates change, encouraging the move away from consumerism and external influences.

BHS900-54: single loop

BHS600-54: double loop

Om
Tamashii®
Tibet



ARIAPREZIOSA
Vicenza Italy

FIRE AGATE

Of all of the red tones, this is the closest to the colour of fire - synonym of bravery, vigour and energy. In Buddhism, only the most devout priests can wear this colour because it requires deep self-control as it could become dangerous to handle.

This Tamashii® helps the wearer to overcome difficulties and insurmountable obstacles, giving motivation and courage.

BHS900-55: single loop

BHS601-55: 6mm

BHS600-55: double loop

ॐ
Tamashii®
Tibet



ARIAPREZIOSA
Vicenza Italy

ROCK CRYSTAL

This colourless natural stone can be used in place of white in its most spiritual sense - purity.

This stone represents air and the mystic world - what is not visible.

A rock crystal Tamashii® preserves and promotes purity and a life of spiritual happiness.

BHS900-61: single loop

BHS600-61: double loop

Om
Tamashii®
Tibet



ARIAPREZIOSA
Vicenza Italy

YELLOW AGATE

Yellow is one of the five essential colours of Buddhism and represents the Buddha, Ratnasambhava who favours the process of transformation where pride is turned into wisdom of identity. Saffron yellow is the colour of monks and signifies detachment from social superstructures and spiritual ascent. This Tamashii® favours the awareness of the self and helps in the search for meaning to a person's life.

BHS900-62: single loop

BHS601-62: 6mm

ॐ
Tamashii®
Tibet



ARIAPREZIOSA
Vicenza Italy

BLACK MATT ONYX

Onyx, the black gemstone par excellence, is used by warrior monks to instil courage and self-esteem. In Buddhism, the colour black also represents humankind's primitive darkness, hate and violence.

A black onyx Tamashii® transforms these negative forces into positive ones - bad into good and hatred into compassion.

BHS900-64: single loop

BHS600-64: double loop

Om
Tamashii®
Tibet



ARIAPREZIOSA
Vicenza Italy

MATT HEMATITE

A black natural stone with iron origins, it can turn red if reduced to dust. This ability to transform itself gives this stone mysterious blood-related characteristics.

Ancient tradition used it to confront fear and overcome death.

A hematite Tamashii® gives courage and protection during physical and mental conflicts.

BHS900-71: single loop

BHS600-71: double loop

ॐ
Tamashii®
Tibet



ARIAPREZIOSA
Vicenza Italy

AFRICAN TURQUOISE

African turquoise is one of the most beautiful ancient stones that's full of mystery.

In Ancient Egypt, it was believed to be able to protect and purify, so it was used for food and drink containers.

Pharaohs' cups were made of African turquoise as they believed it could protect them against disease and infection.

BHS900-75: single loop

BHS601-75: 6mm

BHS600-75: double loop

Om
Tamashii®
Tibet



Om
ARIAPREZIOSA
Vicenza Italy

FOSSIL WOOD

Fossil wood is an organic gemstone, and, because of its origins, it conveys the bond with “Mother Earth”. For this reason, it gives reassurance, calmness and protection.

It also expresses the origins of evolution and wisdom. It strengthens emotional relationships, primarily those within the family.

It encourages the wearer to live a spiritual life.

BHS900-78: single loop

BHS600-78: double loop

ॐ
Tamashii®
Tibet



ARIAPREZIOSA
Vicenza Italy

TIGERS' EYE

Tiger's eye is among the most widely used and appreciated natural stones. According to ancient tradition, it is the stone of empowerment. That is, it has the power to connect us to our inner strength, keeping us balanced and focused.

Thanks to its greater focus, it helps to find self-confidence, decision-making power and a fighting spirit.

BHS900-80: single loop

BHS600-80: double loop



Tamashii®

Tibet



ARIAPREZIOSA

Vicenza Italy

SKY BLUE STRIPED AGATE

Blue is the most important colour in Buddhism, even more so than gold. It represents ascension and wisdom, truth, devotion, faith, peace as well as spiritual and intellectual life.

Stripes make every stone unique, but they are also considered as a metaphor to underline the basic equality of all living beings.

BHS900-84: single loop
BHS601-84: 6mm

Om
Tamashii®
Tibet



Om
ARIAPREZIOSA
Vicenza Italy

PURPLE STRIPED AGATE

If someone special is going through significant life changes, and you want to offer them a unique gift, then purple agate is the perfect present.

It's ideal for confronting new challenges and promoting love towards others.

Stripes make every stone unique, but they are also considered as a metaphor to underline the basic equality of all living beings.

BHS900-85: single loop

BHS600-85: double loop

Om
Tamashii®
Tibet



ARIAPREZIOSA
Vicenza Italy

BLACK LAVA

In the East, lava is often attributed the power to find a better balance with our own inner energies.

It helps to control emotions, live in a less impulsive way and to recover from shock, fear and mental blocks.

It improves awareness and helps us to manage our patterns of behaviour and develop a stronger feeling of freedom.

BHS900-98: single loop

BHS600-98: double loop

ॐ
Tamashii®
Tibet



ARIAPREZIOSA
Vicenza Italy

CAMOUFLAGE STONE

This stone belongs to the agate group, whose power is to protect the wearer.

Its distinctiveness is its texture with tones ranging from dark green to lighter colours.

Its dominant colour is green, whose meaning is the same as for all green stones.

BHS900-101: single loop

BHS600-101: double loop

ॐ
Tamashii®
Tibet



☯
ARIAPREZIOSA
Vicenza Italy

JADE

Jade is a precious stone whose name comes from the Spanish, “pedra de ijada”, meaning “hips stone” due to it having huge beneficial power for the kidneys and lower back. It is one of the most important stones in oriental culture and is often associated with gold to symbolise wealth. Confucius (551-479 B.C.) claims that Jade has eleven virtues, among them - goodness, loyalty (it never irritates the skin), education and sincerity.

BHS900-106: single loop

BHS600-106: double loop



Tamashii®

Tibet



ARIAPREZIOSA

Vicenza Italy

PASSION RED AGATE

This shade of red releases a profound positive energy and imbues protection and safety.

Passion red agate connects with the fire element and is also used to stimulate the vitality that lives within each one of us.

This Tamashi® helps the wearer to seek inner knowledge, by providing courage and passion.

BHS900-124: single loop

BHS601-124: 6mm

BHS600-124: double loop

Om
Tamashii®
Tibet



ARIAPREZIOSA
Vicenza Italy

GARNET

Garnet is considered an important and powerful symbol of renewal. It's often recommended to people who are facing an alteration or change in their lives.

Garnet gives the wearer the opportunity to feel greater self-confidence. It helps to enhance one's self-esteem and it's like a chink of light in the darkest of nights.

BHS900-126: single loop



Tamashii®

Tibet



ARIAPREZIOSA

Vicenza Italy

AMAZONITE

Amazonite is an exceedingly rare stone. Legend has it, that it originated from the Amazon.

It helps you express your own true authentic self, far from the accepted social norms.

This stone signifies optimum communication as it encourages sincere words that come from the heart and, at the same time, helps to maintain a feeling of calm.

BHS900-131: single loop



Tamashii®

Tibet



ARIAPREZIOSA

Vicenza Italy

KUNZITE

Kunzite is the ideal stone for those who want to lose control and just occasionally, let themselves go with the flood of emotions that can overwhelm people. It guides and leads a self-critical approach towards a more useful outcome.

This stone supports reflection, driving the wearer to consider what their own needs are and those of the others.

BHS900-132: single loop

BHS601-132: 6mm



Tamashii®

Tibet



ARIAPREZIOSA

Vicenza Italy

PINK OPAL

Opal is a well-known stone that can attract luck to those who wear or carry it. It strengthens emotions and brings feelings to the surface.

It helps the personal recovery process, curing old wounds and putting resentment at a distance.

It brings good luck and even a shift to playfulness.

BHS900-137: single loop



Tamashii®

Tibet



ARIAPREZIOSA

Vicenza Italy

RHODOCHROSITE

Rhodochrosite is also known as the “Stone of the Compassionate Heart”. It represents generous and unselfish love towards others.

It's also thought that it works as a liberating force letting energies flow.

This gem enhances the wearer's self-awareness.

ॐ
Tamashii®
Tibet



☯
ARIAPREZIOSA
Vicenza Italy

BHS900-139: single loop

GREEN STRIPED AGATE

Agate is a stone than can be found naturally in a wide variety of colours. It brings together the qualities of balance and harmony with youthful energy and action. A Tamashii® in green agate turns jealousy into the wisdom of self-realisation.

The stone's stripes make each one unique, which can be seen as a metaphor to emphasise the fundamental equality of all the living beings.

BHS900-140: single loop

BHS601-140: 6mm

Om
Tamashii®
Tibet



ARIAPREZIOSA
Vicenza Italy

BLUE STRIPED AGATE

Blue is the most important colour in Buddhism, even more so than gold. It represents ascension and wisdom, truth, devotion, faith, peace as well as spiritual and intellectual life.

The stone's stripes make each one unique, which can be seen as a metaphor to emphasise the fundamental equality of all the living beings.

BHS900-141: single loop

BHS601-141: 6mm

BHS600-141: double loop

Om
Tamashii®
Tibet



ARIAPREZIOSA
Vicenza Italy

ENGRAVED BLACK JADE

Black jade is a stone with strong protective properties.

In ancient times, it was used as an amulet to fend off negative energies and to preserve physical and mental integrity.

Confucius (551-479 B.C.) claims that Jade has eleven virtues, among them - goodness, loyalty (it never irritates the skin), education and sincerity.

This bracelet is also available in ENGRAVED BROWN JADE.

BHS900-145: single loop

Om
Tamashii®
Tibet



ARIAPREZIOSA
Vicenza Italy

BLACK CHERRY AGATE

Black cherry agate is a beautiful, rare stone with dark red and purple tones. These stones are often characterised by varying intensities of dark green veining.

Due to its multi-coloured features, this bracelet could be equated to purple or green colours depending on the dominant colour.

BHS900-157: single loop

BHS600-157: double loop

Om
Tamashii®
Tibet



Om
ARIAPREZIOSA
Vicenza Italy

PERSIAN GREEN STRIPED AGATE

Agate is a stone than can be found naturally in a wide variety of colours. It brings together the qualities of balance and harmony with youthful energy and action. A Tamashii® in green agate turns jealousy into the wisdom of self-realisation.

The stone's stripes make each one unique, which can be seen as a metaphor to emphasise the fundamental equality of all the living beings.

BHS900-161: single loop
BHS600-161: double loop


Tamashii®
Tibet




ARIAPREZIOSA
Vicenza Italy

NATURAL PEARL

Natural pearls protect those who wear them and allow them to develop a balanced mood.

They encourage the development of the self to strengthen loyalty and authenticity.

On a physical level, they improve digestion and circulation.

BHS900-179: single loop

BHS601-179: 6mm



Tamashii®

Tibet



ARIAPREZIOSA

Vicenza Italy

PINK TOURMALINE

The name “tourmaline” comes from the Ceylonese word, “turamali”, meaning “blending of colours”. Merchants used this name for all the gems of uncertain identity, due to the large quantity available in nature and their similarity to other minerals.

Tourmaline is believed to be one of the primary stones that help to purify energies and protect against environmental negativity.

BHS900-181: single loop

BHS601-181: 6mm

Om
Tamashii®
Tibet



Om
ARIAPREZIOSA
Vicenza Italy

CHALCEDONY

Chalcedony takes its name from Chalcedon, the ancient Greek city on the Bosphorus.

According to ancient peoples, this blue variant represents the elements of water and air.

It is considered the orators' stone as it represents the ability to listen, understand and make oneself understood.

BHS900-184: single loop



Tamashii®

Tibet



ARIAPREZIOSA

Vicenza Italy

BLACK TOURMALINE

Black tourmaline is the most representative of the property of double refraction - one dark and one light. Its intensity changes depending on the angle of observation.

In Eastern culture, this stone represents the equilibrium between two forces in opposition. It's offered or worn to re-establish the emotional balance when it has been exposed to deeply stressful situations.

BHS900-185: single loop

ॐ
Tamashii®
Tibet



ARIAPREZIOSA
Vicenza Italy

MOONSTONE

Moonstone is the gem of intuition and understanding.

It helps to keep our emotions in balance, accentuating freedom of expression and more specifically calming down impetuous inclinations.

Although it's considered a stone for women, moonstone is often used by men to open up their emotional inner self.

BHS900-186: single loop



Tamashii®

Tibet



ARIAPREZIOSA

Vicenza Italy

PICASSO JASPER

Picasso jasper is a stone whose colours range from dark grey to orange and yellow with black or brown stripes.

Jasper is the stone of creativity, awareness and also of rigour and discipline.

It helps to store all the sensations that come from dreams and to remind us to take some time to enjoy the simple things.

ॐ
Tamashii®
Tibet



ARIAPREZIOSA
Vicenza Italy

BHS900-189: single loop

PINK PEARL

Pink pearl is found in many variations in nature. In the East, the pink pearl is a popular stone for its meaning relates to wealth.

Today, wealth is often related to materialism, but in ancient times it used to be connected with spiritual wealth.

It was worn or given to monks, masters and courageous people.

BHS900-192: single loop

BHS601-192: 6mm

Om
Tamashii®
Tibet



ARIAPREZIOSA
Vicenza Italy

BROWN PEARL

Brown pearl is one of the rarest and most distinctive varieties of pearl.

Eastern purists highly revere this stone because it represents beauty and simplicity - two values still considered of great importance today.

Brown pearl is given to people held in high esteem and expresses a pure feeling that's intimate and genuine.

BHS900-193: single loop


Tamashii®
Tibet




ARIAPREZIOSA
Vicenza Italy

SKY BLUE JADE

Jade is a precious stone whose name comes from Spanish, “pedra de ijada”, meaning “hips stone” due to it having huge beneficial power for the kidneys and lower back. It offers many virtues such as goodness, loyalty, education and sincerity.

The sky blue variant is perfect for pursuing personal dreams or finding a meaning to your visions.

BHS900-196: single loop

BHS601-196: 6mm

BHS600-196: double loop

Om
Tamashii®
Tibet



ARIAPREZIOSA
Vicenza Italy

WATERMELON JADE

Jade is a precious stone whose name comes from Spanish, “pedra de ijada”, meaning “hips stone” due to it having huge beneficial power for the kidneys and lower back.

The watermelon red variant is believed to bring great joy and is also thought to remove negative energies that block the soul. It offers many virtues such as goodness, loyalty, education and sincerity.

BHS900-198: single loop

BHS601-198: 6mm

BHS600-198: double loop

ॐ
Tamashii®
Tibet



☯
ARIAPREZIOSA
Vicenza Italy

PINK JADE

In the ancient Chinese dynasty of the Eastern Han, Jade (yu) was defined as “the most beautiful stone” in their first dictionary. It offers many virtues such as goodness, loyalty, education and sincerity.

Wearing the pink variant encourages your connection with the spiritual world as well as relieving mental and spiritual distress.

BHS900-199: single loop

BHS601-199: 6mm

BHS600-199: double loop

ॐ
Tamashii®
Tibet



☯
ARIAPREZIOSA
Vicenza Italy

AQUA GREEN JADE

In the ancient Chinese dynasty of the Eastern Han, Jade (yu) was defined as “the most beautiful stone” in their first dictionary.

Among Jade’s various properties, this aqua green variant protects children and old people when travelling and offers reassurance to more mature lovers.

BHS900-200: single loop

BHS601-200: 6mm

BHS600-200: double loop

Om
Tamashii®
Tibet



Om
ARIAPREZIOSA
Vicenza Italy

LAVENDER JADE

Jade is a precious stone whose name comes from Spanish, “*pedra de ijada*”, meaning “hips stone” due to it having huge beneficial power for the kidneys and lower back.

The lavender variant, similar to the pink one, relieves the mind and helps to establish a connection with the spiritual world. It offers many virtues such as goodness, loyalty, education and sincerity.

BHS900-201: single loop

BHS601-201: 6mm

BHS600-201: double loop

ॐ
Tamashii®
Tibet



ARIAPREZIOSA
Vicenza Italy

LABRADORITE

Labradorite takes its name from the place where it was discovered, the Labrador Peninsula.

In ancient times, people thought this stone could help to open the doors of mind.

For this reason, labradorite wearers can offer empathy and it helps to form connections with fellow humans.

BHS900-202: single loop

ॐ
Tamashii®
Tibet



ARIAPREZIOSA
Vicenza Italy

FLUORITE

Fluorite is a spiritual stone that promotes thinking skills and is connected to the mind.

If worn, it helps to gradually reach an understanding of one's own ideas and thoughts.

Finally, fluorite enables people to express the completeness of their own self.

ॐ
Tamashii®
Tibet



ARIAPREZIOSA
Vicenza Italy

BHS900-203: single loop

BLUE STONE COLLAR

Blue Stone Collar, also known as Apatite, is a true rarity and its special composition makes it hard to find. In ancient times, it was much sought after because of its original beauty. Its name comes from the Greek word “Apatao” meaning “to deceive” as it was often confused with other gemstones. It has a soothing blue hue, symbolising balance, harmony and energy. The Tamashii® Blue Stone Collar motivates and instils stability, helping in cases of apathy and increasing willpower and determination.

BHS900-204: single loop

ॐ
Tamashii®
Tibet



ARIAPREZIOSA
Vicenza Italy

PEACH JADE

Jade is a precious stone whose name comes from Spanish “pedra de ijada” which means “hips stone” for its great beneficial power on kidneys and lower back. It is one of the most important stones among the oriental culture and it is often associated with gold as wealth symbol.

Confucius (551-479 B.C.) claims that Jade has eleven virtues, among them - goodness, loyalty (it never irritates the skin), education and sincerity.

BHS900-206: single loop

BHS601-206: 6mm



Tamashii®

Tibet



ARIAPREZIOSA

Vicenza Italy

ORANGE JADE

Jade is a precious stone whose name comes from Spanish “pedra de ijada” which means “hips stone” for its great beneficial power on kidneys and lower back. It is one of the most important stones among the oriental culture and it is often associated with gold to symbolise wealth.

Confucius (551-479 B.C.) claims that Jade has eleven virtues, among them - goodness, loyalty (it never irritates the skin), education and sincerity.

BHS900-207: single loop



Tamashii®

Tibet



ARIAPREZIOSA

Vicenza Italy

CRACKED ROCK CRYSTAL

*This colourless stone is used
in place of other white stones
for its highly spiritual
meaning - purity.*

*It additionally represents air
and the mystic world - what is
not visible.*

*A rock crystal Tamashii® bracelet
preserves and promotes the
purity of life that's focused
on spiritual happiness.*

BHS900-208: single loop

BHS601-208: 6mm

ॐ
Tamashii®
Tibet



ARIAPREZIOSA
Vicenza Italy

MINT GREEN AGATE

Agate is a stone than can be found naturally in a wide variety of colours. And here, green represents nature, trees and plants.

It brings together the qualities of balance and harmony with youthful energy and action.

A mint green agate Tamashii® transforms jealousy into the wisdom self-realisation.

BHS900-209: single loop

BHS601-209: 6mm

ॐ
Tamashii®
Tibet



ARIAPREZIOSA
Vicenza Italy

TIBET SKY AGATE

Agate is a stone than can be found naturally in a wide range of colours. The variations of blue may be pale or more intense giving different variant that range from dark like the ocean to the palest sky blue. Blue is an especially important colour in Buddhist cultures as it represents purity, wisdom and peace.

The idea of purity is enhanced in this sky-coloured variation.

BHS900-210: single loop

BHS601-210: 6mm

Om
Tamashii®
Tibet



ARIAPREZIOSA
Vicenza Italy

BLUE ANGELITE

Angelite promotes the ability to clearly express one's own ideas.

This stone is ideal for anyone feeling stressed or caged in by fear, anxiety and apprehension.

It helps to improve the quality of sleep and can be also used to understand the messages within dreams that can be relevant in everyday life.

BHS900-211: single loop

BHS601-211: 6mm

ॐ
Tamashii®
Tibet



☯
ARIAPREZIOSA
Vicenza Italy

DARK YELLOW AGATE

Yellow is one of the five fundamental colours in Buddhism - representing Ratnasambhava Buddha - and helps to turn pride into the wisdom of self-identity. Yellow is monks' colour and embodies the distancing from society's trappings.

This Tamashii® encourages the acknowledgment of oneself and helps to find the meaning in life.

BHS900-212: single loop

BHS601-212: 6mm

ॐ
Tamashii®
Tibet



ARIAPREZIOSA
Vicenza Italy

DARK RED AGATE

Red is the colour of rituals and powerful actions, in Buddhism. It's the colour of passion, strength and what is sacred. It requires strong self-control as it could become dangerous to handle.

Red is the colour that defines the boundary between good and evil.

Red brings power, forcefulness, vitality, passion and denotes a wise person.

BHS900-213: single loop

BHS601-213: 6mm

ॐ
Tamashii®
Tibet



ARIAPREZIOSA
Vicenza Italy

BROWN TIGER'S EYE

Tiger's eye is one of the most widely used and appreciated natural stones. According to the most ancient tradition it is the stone of empowerment.

This means that it can connect the individual to their inner power, keeping them balanced and focused. Due to its power to focus, it assists in finding self-confidence, resolve, fighting spirit and the confidence to make decisions.

BHS900-214: single loop

BHS601-214: 6mm



Tamashii®

Tibet



ARIAPREZIOSA

Vicenza Italy

LAKE GREEN JADE

In the ancient Chinese dynasty of the Eastern Han, Jade (yu) was defined as “the most beautiful stone” in their first dictionary.

The wearers of the green jade variant are considered able to attract money and wealth.

It is important that this wealth is earned through in an ethical way. Jade inspires many virtues, such as benevolence, loyalty, education and sincerity.

BHS900-215: single loop

BHS601-215: 6mm

ॐ
Tamashii®
Tibet



ARIAPREZIOSA
Vicenza Italy

DARK BLUE STRIPED AGATE

Blue is the most important colour
in Buddhism, even more so
than gold.

It represents ascension and
wisdom, truth, devotion, faith,
peace as well as spiritual and
intellectual life.

The stone's stripes make each
one unique, which can be seen
as a metaphor to emphasise the
fundamental equality of all the
living beings.

BHS900-216: single loop

BHS601-216: 6mm

Om
Tamashii®
Tibet



ARIAPREZIOSA
Vicenza Italy

COLOURED MOONSTONE

Moonstone is the gem related to intuition and understanding.

It helps to balance our emotions accentuating freedom of expression and calming impetuous tendencies.

Although it is considered a stone for women, moonstone is often used by men to open up their emotional inner self.

BHS900-220: single loop

BHS601-220: 6mm

ॐ
Tamashii®
Tibet



ARIAPREZIOSA
Vicenza Italy

MULTI-COLOURED STRIPED AGATE

This bracelet unites two ancient traditions – one relating to colour and the other to striping.

In Tibet, each colour corresponds to a specific Buddha which can inspire development.

So, a bracelet with many colours represents all of the virtues that every person is free to aspire to.

Whereas, striping depicts the unity of everything in the universe – a fundamental principal of equality according to Tibetan culture.

BHS900-229: single loop

Om
Tamashii®
Tibet



ARIAPREZIOSA
Vicenza Italy

YELLOW SNOW STONE

Yellow is one of five colours that are fundamental to Buddhism. It encourages the transformation of pride into the wisdom of self-identity.

It is the symbol of humility, promoting distancing from society's trappings.

Green represents the colour of nature, promoting balance and harmony.

BHS900-230: single loop

Om
Tamashii®
Tibet



ARIAPREZIOSA
Vicenza Italy

PALE AMETHYST

Amethyst is also known as the stone of humility.

It's used in Buddhist practices to help during transformative periods and phases of inner growth.

An amethyst Tamashii® calms the pride changing it into reflection and introspection.

ॐ
Tamashii®
Tibet



☯
ARIAPREZIOSA
Vicenza Italy

BHS900-242: single loop

STRAWBERRY QUARTZ

This rare kind of quartz -strawberry quartz - is a calming and soothing crystal that brings love and understanding but can also reenergise and revitalise. It's an excellent stone to have when someone is getting back on track with life. It provides insight into the inner-self and those things the person may wish to work on, by gaining wisdom. It amplifies love in all its forms, gratitude and kindness both towards others and the self.

BHS900-243: single loop

ॐ
Tamashii®
Tibet



ॐ
ARIAPREZIOSA
Vicenza Italy

RUBY - ZOISITE

A combination of fiery ruby and earthy zoisite - this crystal holds the energy of both passion and patience. It's a stone for the heart that balances male and female energies within the body.

This stone lets the wearer see more clearly what lies ahead.

Ruby zoisite promotes development of the inner and outer self, awaking the true self, a joyful engagement with life, by providing a stronger life force to deal with those stressful moments in life.

BHS900-244: single loop

ॐ
Tamashii®
Tibet



☯
ARIAPREZIOSA
Vicenza Italy

HAWK'S EYE

Hawk's eye stone is excellent for focus, mental clarity, and deeper insight into one's own experiences, whether good or bad.

It's a very soothing stone as it aids stress reduction, increases calmness and eases anxiety.

It gives you the ability to see issues that might otherwise have been hard to see.

Hawk's eye is believed to be a stone of protection, often used by travellers.

BHS900-245: single loop

ॐ
Tamashii®
Tibet



ARIAPREZIOSA
Vicenza Italy

STREAKED ICE AGATE

Ice agate or natural geode agate is a stone with shades of grey. In Tibetan culture, grey is interpreted as penance – atonement for transgressions – for the passage and mediation of good and bad. This stone is very often used for the initial phases of a new route in life.

A grey Tamashii® supports the wearer at times of change and renewal. Each stone has a distinctive marking that evokes meditation.

BHS900-246: single loop

ॐ
Tamashii®
Tibet



ARIAPREZIOSA
Vicenza Italy

PURPLE MICA

This is the best stone to stabilise mood. It promotes mental and spiritual balance, particularly when there's a need to calm an impetuous feeling.

It helps to lessen feelings of anxiety through its ability to stabilise and change feelings of anger and resentment into positive, open attitudes.

It leads the wearer to a peaceful place in times of transition.

BHS900-247: single loop

ॐ
Tamashii®
Tibet



ARIAPREZIOSA
Vicenza Italy

K2 STONE

A unique stone mined from the snowy peaks of Pakistan's K2. The K2 crystal meaning is associated with the strength and resolve that comes from feeling harmonious and balanced in all aspects of life.

By evoking the spirit of Chhogori, K2 reminds us that the higher we climb, the more amazing the view at the top. Due to its natural properties, K2 stone can change colour once worn and exposed to external agents.

BHS900-249: single loop

ॐ
Tamashii®
Tibet



ARIAPREZIOSA
Vicenza Italy

RAINBOW STONE

This stone, known for its reflective, shimmering appearance, helps the wearer to recognise their own qualities, by considering their negative traits to aim to remove them and to work towards more positive behaviours.

Rainbow stone is also used to reduce negative, hostile energy. This stone reduces nervous energy and helps the wearer to focus on positive aims.

BHS900-250: single loop



Tamashii®

Tibet



ARIAPREZIOSA

Vicenza Italy

GOLD RUTILATED QUARTZ

Rutilated quartz is a type of quartz characterised by ‘needles’ or flecks of rutile within its structure. It is also known as the “hair of Venus” for these features. This stone reminds the wearers of their own value and inner potential, helping them to strengthen their intention and motivation. Rutilated quartz is a helpful stone at times of change as it smooths bad tempers by offering solace from fear and anxiety.

BHS900-251: single loop

ॐ
Tamashii®
Tibet



ARIAPREZIOSA
Vicenza Italy

WAX JADE

Jade is a stone linked to water,
so it fits with emotions and
femininity – love, reconciliation,
intuition and compassion.

Confucius (551-479 B.C.) claims
that Jade has eleven virtues,
among them - goodness, loyalty
(it never irritates the skin),
education and sincerity.

Its properties are calming and
reassuring. It helps the heart to
find the compassion to make
the right choices. It rebalances
emotions and offers modest
and clarity for ideas.

BHS900-252: single loop



Tamashii®

Tibet



ARIAPREZIOSA

Vicenza Italy

GREEN ANGELITE

One of the primary characteristics of this stone is its ability to improve communication. It shows the wearers how to communicate better with other people, without being afraid of expressing their personal opinions. It offers calmness and relaxation.

Angelite works with the mind, helping it to express its ideas well through good use of words to convey emotions.

BHS900-253: single loop



Tamashii®

Tibet



ARIAPREZIOSA

Vicenza Italy

TRIDACNA

Tridacna is made from a shell that is of the purest white – and it's very rare.

Its surface shows characteristic markings. It alleviates anxiety and promotes calm.

It helps to stabilise the wearers' mood, and it lightens and balances the mind and emotions by freeing them of worry and anxiety.

ॐ
Tamashii®
Tibet



ॐ
ARIAPREZIOSA
Vicenza Italy

BHS900-254: single loop

AQUAMARINE

Aquamarine is a blue stone linked to the emotions and spirituality. It's a calming, reassuring stone that stimulates creativity, self-expression and communication.

The characteristics of this stone inspire the wearer to be of service to others and to assume a compassionate viewpoint.

Aquamarine also helps to free oneself of old, negative feelings or feelings that confine the individual.

BHS900-255: single loop



Tamashii®

Tibet



ARIAPREZIOSA

Vicenza Italy

BLENDED OPAL

Opals come in all sorts of variants and colours. According to Australian Aborigines, when God the Creator came to earth and his feet touched the ground, they made the stones shimmer with every colour of the rainbow, which created opals. With this union of all the elements, this stone is the symbol of intellect and memory.

It rebalances the emotional state, stimulates creative thought and inspires confidence.

BHS900-256: single loop



Tamashii®

Tibet



ARIAPREZIOSA

Vicenza Italy

100

KYANITE

This is believed to be the stone of loyalty and clarity, that promotes a clearer, more profound view of reality. This view goes beyond appearances by avoiding preconceptions and other ideas about a person. It helps in understanding what is best for the individual and which new route to take. It encourages spontaneity, by assisting with the connection to the inner creative source. Kyanite offers clear, stimulating energy.

BHS900-257: single loop



Tamashii®

Tibet



ARIAPREZIOSA

Vicenza Italy

PIETERSITE

Known as the “stone of the storm”, Pietersite encapsulates beauty with the essence of lightning, through its shimmering glow of golden light that blends with the darkest blue. It represents the cleansing that follows a storm, where the power of the elements coexist in unity. Made up of various minerals including hawk’s eye, tiger’s eye and hematite, it helps to overcome too much dependence on others and to manage chaotic and stormy change.

BHS900-258: single loop

ॐ
Tamashii®
Tibet



ARIAPREZIOSA
Vicenza Italy

ARCTIC JASPER

*Jasper strengthens the mind
and inspires courage.*

*It's a very rare stone that
encourages respect and
consideration for oneself, by
helping to accept oneself for
who they are and by offering
a balancing effect on the
emotions. It helps to maintain
straightforward, honest behaviour
even when life's circumstances
beckon toward a more dishonest
route. It possesses a highly
calming circular energy, focussed
on continuous renewal.*

BHS900-259: single loop



Tamashii®

Tibet



ARIAPREZIOSA

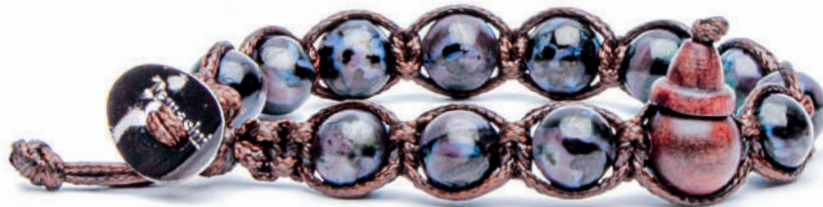
Vicenza Italy

INDIGO GABBRO

This stone originates from the volcanoes of Madagascar and Alaska. It promotes self-awareness by encouraging intuition. Known as the “wise soul”, it can bring buried problems to the surface by confronting them with strength and love. Its energy resolves obscurity by promoting action with a higher and more enlightened purpose. This stone guides the wearer through change and spiritual development.

BHS900-260: single loop

ॐ
Tamashii®
Tibet



ARIAPREZIOSA
Vicenza Italy

FOSSIL CORAL

Fossil Coral, also called Hexagonaria due to its natural hexagonal shape, is a stone of grey hues made up of Coral and Agate. Centred around expressiveness and sociability, it relieves anxiety as well as mental stress and social tension. It promotes, team working, the ability to communicate and collaboration for group work too.

Unlike Red Fossil Coral that's found in Siberia, Fossil Coral has European origins and as a result has different tones.

BHS900-261: single loop

ॐ
Tamashii®
Tibet



ARIAPREZIOSA
Vicenza Italy

MOCHA STONE

Mocha Stone has a white agate base and red veining. It promotes a sociable, pleasant disposition while ensuring that boundaries between the self and others always remain clear and well-defined.

Free of psychological mechanisms, habits and ideas unconsciously become one's own. "Mocha stone" takes its name from the gates of Mocha on the Arabian Peninsula and their splendour due to its trade in coffee until the 19th century.

BHS900-262: single loop

ॐ
Tamashii®
Tibet



ARIAPREZIOSA
Vicenza Italy

ASTROPHYLLITE

Astrophyllite, from the Greek Astron meaning star and Phyllon that signifies leaf, is a very rare black stone with brown highlights and limited supply. It allows the wearer to see themselves from the outside and assists in understanding what limits and should be removed from their own life by recognising what is really important in life. Stimulates inspiration and the ability to express oneself; increases dreaming.

BHS900-263: single loop



Tamashii®

Tibet



ARIAPREZIOSA

Vicenza Italy

IOLITE

Iolite, also known as Cordierite, takes its name from the Greek “ios” meaning “violet” and directly reflects the colour of this stone. This stone helps to resolve links with the past, by pushing the individual to achieve their own goals through the stimulation of their independence.

The Vikings used to make lenses from Iolite to track the exact position of the sun when navigating the Atlantic Ocean.

BHS900-264: single loop



Tamashii®

Tibet



ARIAPREZIOSA

Vicenza Italy

GOLD AND TURKESE

This variety of Turquoise comes from Madagascar, and is different from classic African Turquoise due to its inclusion of yellow/red jasper. For Tibetans, turquoise represents the circle of life, from birth to death. As such it links to this stone's potential to change colour. It offers balance, encouragement and joy for life. According to Turkish legend, it was also able to warn the wearer of any approaching danger.

BHS900-265: single loop

Om
Tamashii®
Tibet



ARIAPREZIOSA
Vicenza Italy

RED FOSSIL CORAL

Red Fossil Coral, also known as Hexagonaria due to its natural Hexagon form, is a stone With red tones formed of coral with inclusions of jasper. Focused on expressiveness and sociability, it relieves anxiety as well as mental stress and social anxiety. It also promotes the ability to communicate, team spirit and collaborative group work. Unlike Fossil Coral that has European origins, Red Fossil Coral comes from Siberia and for this reason has different colour tones.

BHS900-266: single loop

Om
Tamashii®
Tibet



Om
ARIAPREZIOSA
Vicenza Italy

RED GLUE FLOWER STONE

Red Glue Flower Stone has a transparent rock crystal part that represents the mystical world and provides peace and harmony through the stimulation of clear thinking. It also preserves and promotes a state of purity and spiritual transparency. Whereas in the red parts of the stone, we find Jasper that strengthens faith in personal ideals by instilling strength, courage and determination. This stone is often used for making spheres that represent perfection and are used for meditation.

BHS900-267: single loop

ॐ
Tamashii®
Tibet



ARIAPREZIOSA
Vicenza Italy

YAMDROK JADE

Yamdruk Jade is also known
in Tibet as Jade of the South
- as in the south of Tibet.

It is a specific green coloured
stone found in the area around
Lake Yamdrok at 4,441 m
altitude, and according to
Tibetan mythology, it is the
incarnation of a Goddess.

It lends the ability to contemplate
judgements on others and to
raise your own level of awareness.
It favours honesty and justice,
and for this reason it is always
worn during negotiations.

BHS900-268: single loop

ॐ
Tamashii®
Tibet



ARIAPREZIOSA
Vicenza Italy

BLUE OCEAN STONE

It is a commonly worn gemstone throughout India. In ancient times, these brightly coloured stones were thought to embody the wise, spiritual “souls of the ocean”. It remains a much appreciated gift today for anyone embarking on a new life path. For Buddhism, blue is the most important colour, as it represents ascension and wisdom, intellectual and spiritual life. The Tamashii® Blue Ocean Stone symbolises harmony, balance and calm, promoting a state of rest and relaxation.

BHS900-269: single loop



Tamashii®

Tibet



ARIAPREZIOSA

Vicenza Italy

AVENTURINE

The name of this stone derives from the Italian “à ventura”, i.e. “randomly”. The most common version is green, but in nature there is also a much rarer orange shade. The orange Tamashii® Aventurine revitalises human relationships and is an antidote to shyness and anxiety.

It fosters positive thinking, aligns the mind with the heart and bestows resourcefulness and optimism.

BHS900-270: single loop

ॐ
Tamashii®
Tibet



ARIAPREZIOSA
Vicenza Italy

PHOSPHORUS ALUMINUM

Also known as Variscite, it is named after Variscia, the historical name of the Vogtlandkreis rural district in Germany, where it was first discovered. Traces can also be found in Sardinia, where it is formed by phosphorus-rich rainwater that falls onto rocks containing plenty of aluminium and gradually infiltrates into the cracks. The Tamashii® Phosphorus Aluminum fosters sincerity by helping to communicate with others clearly, enhancing mental clarity. It counteracts mood swings by instilling calm and peacefulness.

BHS900-271: single loop

ॐ
Tamashii®
Tibet



ARIAPREZIOSA
Vicenza Italy

MICA CRYSTAL

Mica Crystal, also known as Lepidolite, can be found in different colours from pale violet to colourless, and the crystal version is very rare.

The Tamashii® Mica Crystal releases fears and calms anger, encourages objectivity and concentration, and fosters analysis and decision-making. It helps to focus on what is important by filtering out external distractions, relieving feelings of anxiety thanks to its harmonising characteristics of positivity and openness to others.

BHS900-272: single loop



Tamashii®

Tibet



ARIAPREZIOSA

Vicenza Italy

NEW OCEAN STONE

It is a commonly worn gemstone throughout India. In ancient times, these brightly coloured stones were thought to embody the wise and deeply spiritual “souls of the ocean”. It remains a much appreciated gift today for anyone embarking on a new life path. The Tamashii® New Ocean Stone helps both to harmonise emotions such as joy and to find inner peace. It enables people to better overcome past traumas and helps them understand their true daily needs.

BHS900-273: single loop



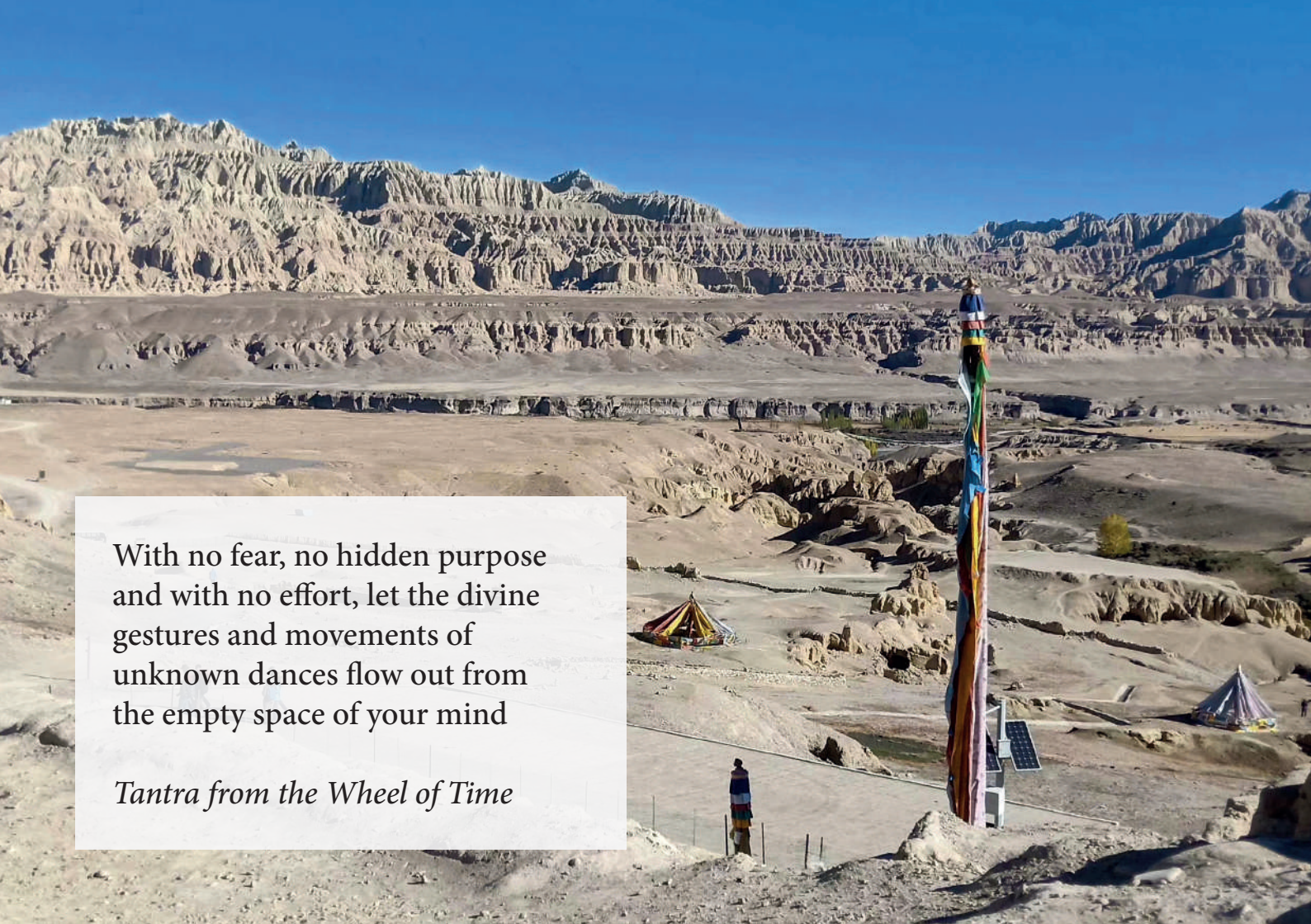
Tamashii®

Tibet



ARIAPREZIOSA

Vicenza Italy

A wide-angle photograph of a high-altitude, arid landscape. In the foreground, a tall, slender prayer pole (Dzökh) stands on a rocky outcrop, adorned with colorful prayer flags. To its left, a small, colorful tent is visible. In the background, a vast, flat valley stretches out, leading to a range of rugged, layered mountains under a clear blue sky. A person is standing near the base of the prayer pole, providing a sense of scale.

With no fear, no hidden purpose
and with no effort, let the divine
gestures and movements of
unknown dances flow out from
the empty space of your mind

Tantra from the Wheel of Time

SERPENTINE

A gemstone known since antiquity, it was already used in pre-Roman times for making amulets. In the Middle Ages, it was believed to be able to overcome fear. It is also well suited for meditative and spiritual experiences.

The Tamashii® Serpentine encourages the wearer to seek solitude, in order to gain inner peace by boosting his or her self-esteem. It helps to reach amicable solutions in conflicts with others.

BHS900-274: single loop



Tamashii®

Tibet



ARIAPREZIOSA

Vicenza Italy

YELLOW TURQUOISE

This is a rather unusual variant of the classic Turquoise, which is more of a blue-green colour.

For Tibetans, it represents the circle of life from birth to death.

Both come from the same mines, but yellow turquoise used to be mined in smaller quantities than the classic turquoise, because it was considered a less prestigious grade.

Yellow is also the symbol of Buddhist monks.

The Tamashii® Yellow Turquoise calms the soul by transforming anger into wisdom. It provides balance, awareness and spiritual upliftment, as well as strengthening one's rootedness with the Earth.

BHS900-275: single loop



Tamashii®

Tibet



ARIAPREZIOSA

Vicenza Italy

GREEN QUARTZ

The name Quartz comes from the Greek word “Krystallos Yalos”, meaning transparent crystal.

It is found in nature in numerous colours and each one of them has a different name. Green Quartz is a low-cost stone which was well known and much used in the past. It instils mastery and encourages the wearer to overcome shyness, while also helping to dissipate anger and rage.

The Tamashii® Green Quartz is perfect for curbing your impulsive side, should you have one, and helps to direct this great energy into something more useful.

BHS900-276: single loop

ॐ
Tamashii®
Tibet



ARIAPREZIOSA
Vicenza Italy

GOLD SILK JADE

This unique variety of Jade has orange hues with yellow and white undertones and is extremely hard to find. It comes from China, where in ancient times it was regarded as the union between the living essences of heaven and earth, and was considered sacred. There is also an ancient proverb that went: "We can value gold, but jade is priceless". Also known as the stone of purity, it has been claimed since antiquity to attract love and enhance the wearer's charisma. This Tamashii®'s distinctive, sunny colour has a stimulating energy, which bestows a pleasant peacefulness.

BHS900-277: single loop

Om
Tamashii®
Tibet



ARIAPREZIOSA
Vicenza Italy

WHITE AOBAO

A gemstone from Australia, also called the White Opal. The word “opal” shares common roots with the Sanskrit “ūpala”, which can be translated as “precious stone”, a meaning that highlights its importance and sacredness.

There are many varieties, but this white version is traditionally said to bring peacefulness by dispelling the fear of darkness.

The Tamashii® White Aobao makes you open-minded, alert and flexible, and helps you adapt to changing situations. It activates thinking, speaking and acting by promoting discussion and socialisation.

BHS900-278: single loop



Tamashii®

Tibet



ARIAPREZIOSA

Vicenza Italy

BLUE SKY STONE

A variety of Agate from the far north-east of China, specifically from Manchuria. Sky-blue in colour, it has slight white tones that evoke purity and proximity to the divine. It instils calm and peacefulness and engenders a peaceful temperament.

The Tamashii® Blue Sky stone helps you maintain a profound sensitivity and integrity, while encouraging concentration on your goals.

BHS900-279: single loop



Tamashii®

Tibet



ARIAPREZIOSA

Vicenza Italy



THE PRAYER WHEEL

The “Prayer Wheel” is a typically Tibetan religious object.
The wheel has the mantra, “Om Mani Padme Hum”, engraved in Sanskrit on its outer edge.

According to traditional Tibetan Buddhist teaching, the movement – even unintentional - of the wheel has the same beneficial effect as saying a prayer.

This collection inherits the specific design and strong meaning of the Tamashii® “Prayer Wheel” collection, all made in 925 Stirling Silver.



Mod. ENGRAVED SILVER SPHERE

The original Tamashii® bracelets of the “Prayer Wheel” line with engraved ball wheel in 925 Stirling Silver are made using natural stones.

They are enriched by a 925 Stirling Silver sphere wheel engraved with the mantra “Om Mani Padme Hūm” of the Buddha of Compassion Cenresig.





BHS1100-07 (Turquoise)



BHS1100-12 (Green Agate)



BHS1100-14 (White Agate)



BHS1100-17 (Moos Agate)



BHS1100-18 (Blue Agate)



BHS1100-22 (Hematite)



BHS1100-34 (Red Agate)



BHS1100-51 (Sodalite)



BHS1100-64 (Matt Onyx)



BHS1100-75 (African Turquoise)



BHS1100-98 (Lava)



BHS1100-124 (Passion Red Agate)



BHS1100-196 (Sky Blue Jade)



BHS1100-33 (Pink Jade)



BHS1100-200 (Water Green Jade)



BHS1100-214 (Tiger's Eye)



BHS1100-245 (Hawk's Eye)

Mod. ALTERNATE SPHERES ENGRAVED IN SILVER

This collection evokes “Prayer wheels”, a typically Tibetan religious object. Traditionally, the wheel has the mantra, “Om Mani Padme Hum”, engraved in Sanskrit.

According to traditional Tibetan Buddhist teaching and their writings on the subject of prayer wheels, spinning the prayer wheels has the same beneficial effect as saying a prayer.

These engraved loops – either barrel or round beads – are made in 925 Stirling Silver.



BHS900-01S
(Onyx)



BHS900-07S
(Turquoise)



BHS900-12S
(Green Agate)



BHS900-14S
(White Agate)



BHS900-18S
(Blue Agate)



BHS900-124S
(Red Passion Agate)



BHS900-199S
(Pink Jade)



BHS900-214S
(Brown Tiger's Eye)



BHS900-221S
(Onyx Mantra Matting)

Mod. SILVER WITH
ENGRAVED SPHERES



BHSg24-S2

Round bead loop in 925 Stirling Silver, engraved.
Black cord. One, adjustable size



BHSg24-S4

Barrel bead loop in 925 Stirling Silver, engraved.
Brown cord. One, adjustable size



BHSg24-S1

Barrel bead loop in 925 Stirling Silver, engraved.
Black cord. One, adjustable size



BHSg24-S3

Round bead loop in 925 Stirling Silver, engraved.
Brown cord. One, adjustable size



RHSg24-S1/S2

Oval ring in 925 Stirling Silver, engraved.

S1: Sizes 10/18 - S2: Sizes 20/28



RHSg25-S1/S2

Round ring in 925 Stirling Silver, engraved.

S1: Sizes 10/18 - S2: Sizes 20/28



TIBETAN PRAYER FLAGS

The famous Lung-Ta prayer flags mean “wind horse” and are hung in extremely isolated places such as the Himalayan summits, as well as more everyday locations such as houses or places of worship, like monasteries or Buddhist temples. Traditionally there are five flags, each with a different colour: blue, white, red, green and yellow. And they respectively represent the five elements – sky (blue), air (white), fire (red), water (green) and earth (yellow).

Usually, the flags have a mantra printed on them that calls for harmony, compassion, wisdom, strength, peace and protection. It is believed that the wind carries the prayer blessings printed on the flags on the air and into the surrounding area. We wanted to reflect these spiritual devices in this Stirling Silver range and to evoke the Tibetan cultural belief that these flags can bring peace, happiness and prosperity.

NHS924-S6

Stirling Silver necklace with engraving of the mantra of compassion "Om Mani Padme Hum"



BHS924-S5

Stirling silver bracelet with engraving of the mantra of compassion
— Small flags (one size)



BHS924-S6

Stirling silver bracelet with engraving of the mantra of compassion
— Medium flags (one size)

The whole collection – necklace and bracelet – are available with a traditional dark brown cord or in one of the five characteristic colours of the Tibetan prayer flags.

B - Blue (Sky)

Eternity, peace,
spiritual power



W - White (Air)

Altruism, purity,
enlightenment



R - Red (Fire)

Passion, strength,
fighting spirit



G - Green (Water)

Life, balance,
tranquillity



Y - Yellow (Earth)

Grounded, humility,
responsibility



Tamashii® RINGS

RHS900-...

Tamashii® rings are engraved with the “Om Mani Padme Hūm” Mantra which relates to Chenrezig, the Buddha of compassion. This is one of the best-known mantras in Buddhism. The mantra tells us not to seek Nirvana outside of Samsara, but rather within its essence - everyday life.

In antiqued and rose 925
Stirling Silver.

See the collection and available
sizes at www.tamashiibracelet.com

Om
Tamashii®
Tibet



ARIAPREZIOSA
Vicenza Italy

RHS901-00

Original Tamashii® ring engraved with “Om Mani Padme Hūm” Mantra related to Chenrezig, the Buddha of compassion. This is one of the best-known of Buddhism’s mantras and embellished with Vajra, the symbol for lightning.

Made in 925 Stirling Silver. Available in various sizes.



RHS902-00

Ring, with spinning central section, engraved with symbols representing the sacred and solemn “Om”. The spinning section represents the Buddhist “Prayer Wheel”.

Made in 925 Stirling Silver. Available in various sizes.



QUARTZ MOSAIC

Quartz mosaic is a natural harmoniser.

This blend of quartz mosaic and pyrite sand gives balance, alleviates the feeling of insecurity by combatting negative energy and encouraging self-confidence. This allows the flow of goodwill, kindness and happiness. Depending on the colour, it assumes different meanings and significance.



ॐ
Tamashii®
Tibet

BHS900-235
(Blue Quartz Mosaic signifies purity, wisdom and peace)



BHS900-236
(Purple Quartz Mosaic helps with inner
development and change)



BHS900-237
(Green Quartz Mosaic symbolises balance and harmony,
but also youthful vigour and action)



BHS900-238
(Mixed Quartz Mosaic includes the properties
from all of its colours)



BHS900-239
(Red Quartz Mosaic signifies strength, vitality, passion
and a deep positive energy)



BHS900-240
(Blue Quartz Mosaic symbolises ascension
and wisdom, devotion and faith)

BLUES

This distinctive range of original Tamashii® bracelets is created with natural stones and features a new BLUE cord.

All the bracelets from this collection are gender-neutral and fit any wrist size.





BLUES900-210
(Sky Blue Agate)



BLUES900-215
(Lake Green Agate)



BLUES900-216
(Dark Blue Striped Agate)



BLUES900-224
(Pale Yellow Jade)



BLUES900-225
(Light Blue Jade)

BLACKS

This line of original Tamashii® bracelets is created with some of the most loved stones, combined with a new BLACK cord.

All the bracelets from this collection are gender-neutral and fit any wrist size.





BLACKS900-213
(Dark Red Agate)



BLACKS900-218
(Green Stone Collar)



BLACKS900-221
(Matt Onyx with Mantra in gloss contrast)



BLACKS900-223
(African Jasper)



BLACKS900-234
(Matt Onyx with Traditional Decoration)

Tamashii® MANTRA

The Mantra collection represents a special range of Tamashii® bracelets.

Stones are interspaced with genuine oriental wooden grains, hua qi-nanmu, which have been engraved and hand painted with mantra symbols. A mantra is a word in Sanskrit, the language of the ancient Vedic culture. The engraved symbols are two Sanskrit syllables: “man”, that means thought, breathe, living soul, and “tra”, meaning what is free and what does, acts or protects. From this explanation, the word Man-tra can be defined as “the way to free, modify the mind”.





BHS200-01 (Onyx)



BHS200-07 (Turquoise)



BHS200-08 (Amethyst)



BHS200-12 (Green Agate)



BHS200-14 (White Agate)



BHS200-17 (Moos Agate)



BHS200-18 (Blue Agate)



BHS200-19 (Carnelian)



BHS200-22 (Hematite)



BHS200-31 (Ocean)



BHS200-33 (Pink Quartz)



BHS200-34 (Red Agate)



BHS200-53 (Sky Blue Agate)



BHS200-55 (Flame Red Agate)



BHS200-56 (Cracked Grey Agate)



BHS200-62 (Yellow Agate)

Tamashii® BKRA SHI

Amulets made with onyx stones that have been produced through ancient techniques to create symbols inspired by the oldest Buddhist traditions, the Nyingmapa (rNin-ma-pa: “Ancestry of the Ancients”).

They express primordial yet incredibly powerful concepts. Following tradition, every symbol must relate to a force connected with classical tantras, to reinforce or pursue the principles of the Buddhist philosophy.





BHS500-01 "Respect"



BHS500-02 "Peacefulness"



BHS500-03 "Protection"



BHS500-04 "Joy"



BHS500-05 "Prosperity"



BHS500-06 "Health"



BHS500-07 "Positivity"



BHS500-08 "Courage"



BHS500-10 "Intellect"



BHS500-11 "Safety"



BHS500-12 "Wisdom"



BHS500-13 "Passion"

TIBETAN MALA

NWS900/901/902

Tibetan Mala is an amulet used as the rosary by Buddhist monks for reciting mantras.

Every Mala is made of 108 scented, original wooden beads. The 108 wooden beads represent the 108 Buddhas summoned to protect and help those in difficulty, earn wealth and remove any threat.

Discover the MALA collection at
www.tamashiibracelet.com



Tamashii®

Tibet



ARIAPREZIOSA

Vicenza Italy

Tamashii® MUDRA and SHORT MUDRA

Necklaces made of 108 and 54 beads
along with Calabash, Vajra and Ghanta.

Vajra (lightning) and Ghanta (bell)
represent the opposites that exist
side-by-side. Ghanta is the feminine
symbol of the body, while Vajra is the
masculine symbol of the mind.

During the Buddhist rituals, Vajra
is held in the right hand and Ghanta
in the left.

ॐ
Tamashii®
Tibet



Short Mudra
(54 beads - 45cm/18in - open)
NHS1600- ...

Long Mudra
(108 beads - 90 cm/35in - open)
NHS1500- ...

NHS1500-01
(Onyx)



NHS1500-14
(White Agate)



NHS1500-07
(Turquoise)



NHS1500-17
(Moss Agate)



NHS1500-18
(Blue Agate)



NHS1500-94
(Brown Striped Agate)



NHS1500-64
(Matt Onyx)



NHS1500-19
(Carnelian)



NHS1500-140
(Green Striped Agate)



NHS1500-157
(Black Cherry Agate)



NHS1500-229
(Agate Mix Color Striped)



NHS1500-179
(Natural Pearl)



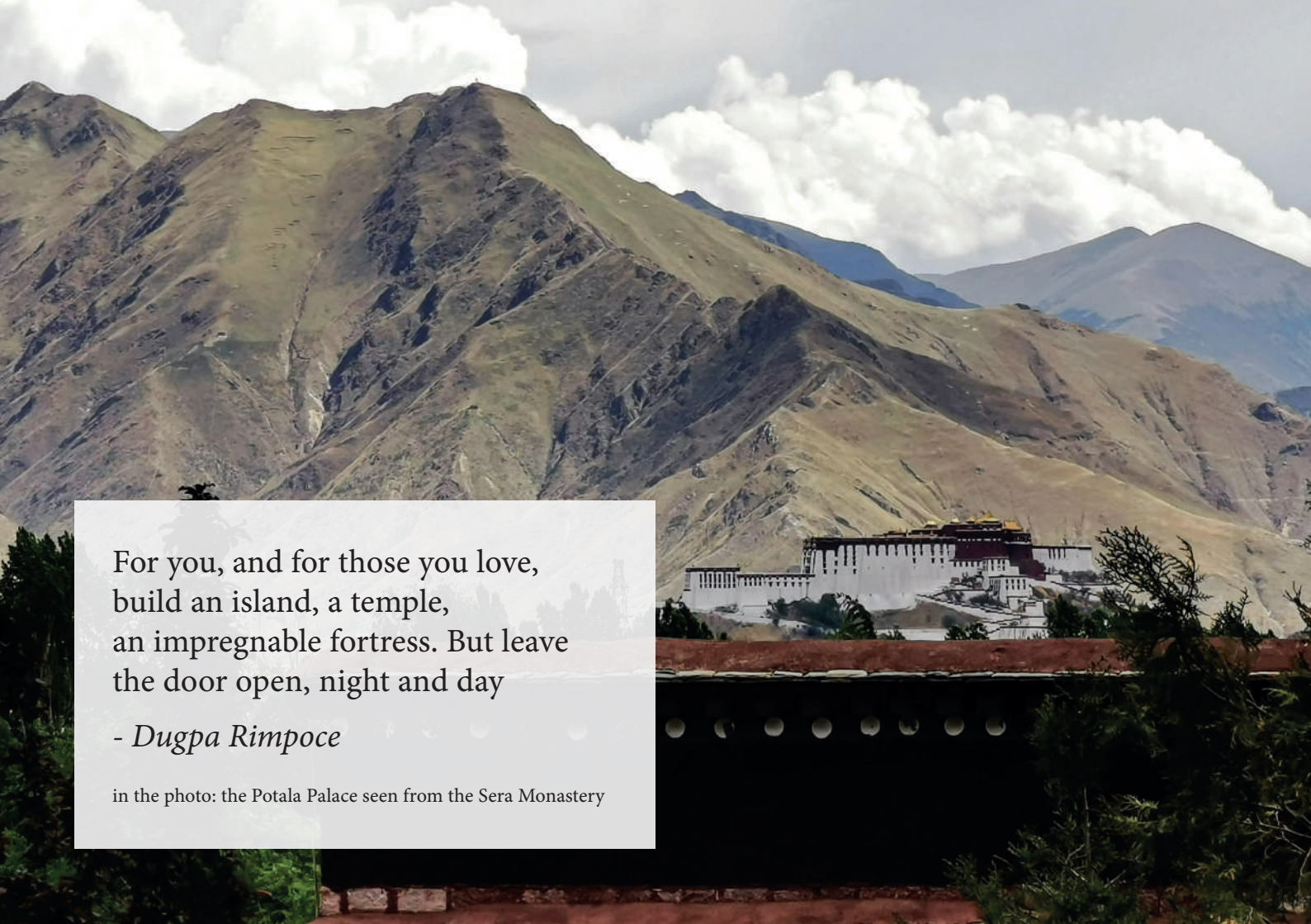
This necklace is 73 cm long

NHS1500-165
(Sky Blue Striped Agate)



NHS1500-255
(Aquamarine)





For you, and for those you love,
build an island, a temple,
an impregnable fortress. But leave
the door open, night and day

- *Dugpa Rimpoce*

in the photo: the Potala Palace seen from the Sera Monastery

NHS1600-01
(Onyx)



NHS1600-12
(Green Agate)



NHS1600-17
(Moos Agate)



NHS1600-07
(Turquoise)



NHS1600-18
(Blue Agate)



NHS1600-22
(Hematite)



NHS1600-64
(Matt Onyx)



NHS1600-51
(Sodalite)



NHS1600-31
(Ocean Agate)



NHS1600-75
(African Turquoise)



NHS1600-80
(Tiger's Eye)



NHS1600-124
(Passion Red Agate)



NHS1600-179
(Natural Pearl)



NHS1600-98
(Lava)



NHS1600-214
(Brown Tiger's Eye)



EARRINGS

Original Tamashii® earring collection combines with natural stone bracelets and necklaces featuring butterfly-styled Stainless-Steel clasp and brown cord. These elements are the fundamental principles underpinning traditional Tamashii® design. Their shape echoes the traditional Calabash - made from wood characterising all our bracelets and necklaces and representing a seed-filled pumpkin to reflect life's continuity.



EHST2-43

Two-stone earrings made with 2 stones measuring 6 and 8 mm

Each earring length measures: 3.7 cm

Weight: 6 g

EHST3-07

Three-stone earrings made with 3 stones measuring 4, 6 and 8 mm

Each earring length measures: 4.4 cm

Weight: 6,8 g





EHST2-01



EHST2-08



EHST2-12



EHST2-31



EHST2-39



EHST2-124



EHST2-179



EHST2-196



EHST2-199



EHST2-255



EHST2-257



EHST3-14



EHST3-18



EHST3-33



EHST3-80



EHST3-184



EHST3-197



EHST3-201

LOBE EARRINGS

Tibetan Lamaism is divided into several schools, the most characteristic and ancient of which is the elders' school, rNin ma pa. Their monks wear different head coverings, each of which identifies the hierarchical and spiritual role each monk plays within the school itself.



(EHST₄₋₁₂)

RIG ZVA

Rig Zva is the headgear worn by students who have successfully passed their exams on the Sgrub Grva course. In Tibet, this earring is also worn on its own by men.

925 Antiqued silver

Gemstone diameter: 6 mm

PAN ZVA

Pan Zva is the headgear worn by Pandita abbots, "the erudite ones".

925 Antiqued silver

Gemstone diameter: 8 mm



(EHST₅₋₁₂₄)



EHST4-01



EHST4-07



EHST4-14



EHST4-18



EHST4-80



EHST4-124



EHST4-199



EHST4-210



EHST5-01



EHST5-07



EHST5-12



EHST5-14



EHST5-18



EHST5-80



EHST5-199



EHST5-210

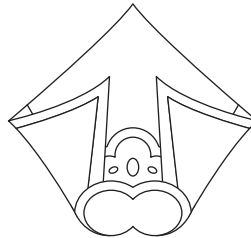
ZVA Rings

All of our rings are in 925 Sterling Silver and have natural stones.

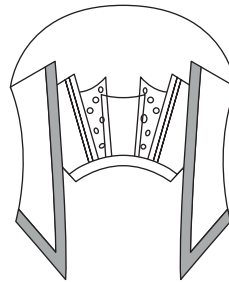
Lamaism is divided into different schools in Tibet. Among the more ancient and distinctive is that of the **rNin ma pa**, meaning “the ancients”, or the second school.

Their monks wear different headwear, each of which identifies the hierarchical and spiritual role within the school. This then relates to their importance in the instruction of mystic experiences.

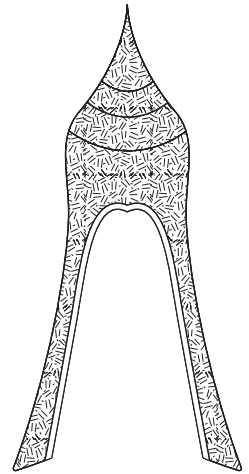
Each ring is engraved with the mantra
“Om Mani Padme Hūm”



RIG ZVA



DVAGS ZVA



PAN ZVA

DVAGS ZVA

Hat worn by Gampopa, one of the leading gurus of the Kagyu Tibetan Buddhist school.
According to legend, this hat takes its shape from a pair of shoes given to Gampopa
by Mi la ras pa (Milarepa), to whom he was deeply devoted.

(RHS905-...)



PAN ZVA

Hat worn by Pandita abbots, “the scholars”.

(RHS903-...)

RIG ZVA (Rig Adsın Spyı Zva)

Hat worn by students who have passed the Sgrub Grva exam,
reserved for Grub Bla Ma and abbots (Gdan Sa).

(RHS904-...)





RHS905-01



RHS905-07



RHS905-08



RHS905-12



RHS905-14



RHS905-53



RHS905-124



RHS905-18



RHS905-75



RHS905-196



RHS903-01



RHS903-07



RHS903-08



RHS903-12



RHS903-14



RHS903-53



RHS903-124



RHS903-18



RHS903-75



RHS903-196



RHS904-01



RHS904-07



RHS904-08



RHS904-12



RHS904-14



RHS904-53



RHS904-124



RHS904-18



RHS904-75



RHS904-196

RIG ZVA Pendant

This pendant's shape is inspired by the RIG ZVA (Rig Adsin Spyi Zva) hat, worn by students of the rNin Ma Pa, meaning "of ancients", school. Anyone who wears this symbol is interested in the instruction of the mystical experience that develops a deeper spirituality.

The stone is 10mm in diameter and the pendant is provided with a cotton cord (65cm/25in) with an original Tamashii® fastener.



NHS1700-124





NHS1700-01



NHS1700-07



NHS1700-08



NHS1700-12



NHS1700-14



NHS1700-18



NHS1700-53



NHS1700-62



NHS1700-75



NHS1700-196

DETAILS ON THE ORIGIN OF THE PRODUCT

TAMASHII® are produced in the Middle East (Himalaya region) following ancient traditions, using inspected products, techniques and processes by Aria Preziosa. The TAMASHII® brand is owned by Aria Preziosa Srl.

CONSUMER HEALTH PROTECTION, USE AND MAINTENANCE

All TAMASHII® Jewellery is handcrafted with natural stones and materials in compliance with rules related to the protection of people. All the metals we use have a nickel content **in compliance with the regulation, EN 1811:2011**.

Every TAMASHII® piece is made to last, as long as they are cared for and looked after following our instructions. All materials used are natural in origin so they may change or alter if not cared for in the right way or if they come into contact with chemicals, such as cosmetics, creams, perfume, soap, bleach, salt water and so on.

TAMASHII® jewellery conform to the provisions set out in **EU regulations and the Italian Consumer Protection Code Decree 206/2005**.



Tamashii® is a registered trademark of **ARIA PREZIOSA S.r.l.**

Via Dell'Oreficeria 30L, 36100 Vicenza - ITALY | Tel. +39 0444 1453306

www.tamashiibracelet.com

COPYRIGHT © 2022 Aria Preziosa S.r.l. - Vicenza (Italy)

All rights reserved



tamashiibracelet



tamashiibracelet



tamashii_bracelet